



## FREE GUIDED MODEL VILLAGE TOURS

Head on over for a free, personalized model tour, and one of our knowledgeable housing consultants will answer any questions you may have.



## HOMES ARE GOING FAST!

Come see our newest homes and get Factory Select Pricing!

**800.706.1701**

179 Highway 601 South  
Lugoff, SC 29078

[MHFactorySelectHomes.com](http://MHFactorySelectHomes.com)

FACTORY SELECT PRICING



**800.706.1701**

179 Highway 601 South  
Lugoff, SC 29078



SCAN ME

Check out our latest promotions!

[MHFactorySelectHomes.com](http://MHFactorySelectHomes.com)



## Your Beautiful New Home IS WAITING

START YOUR HOME JOURNEY



## WHY FACTORY SELECT HOMES

- We partner with many different factories, saving our home buyers money
- Wide variety
- Over 18,000 happy homebuyers
- Free model village tours daily
- Specializes in custom orders
- Famous for running HUGE sales & promotions
- Furnished model villages at every sales center
- Convenient, complimentary hotel rooms for customers

## THE FACTORY SELECT PROMISE

Our homes are manufactured by only the best and most trusted brands.



### PRODUCTION

The unsurpassed quality of every home is possible thanks to innovative manufacturing processes and a commitment to outstanding design.



### MATERIAL

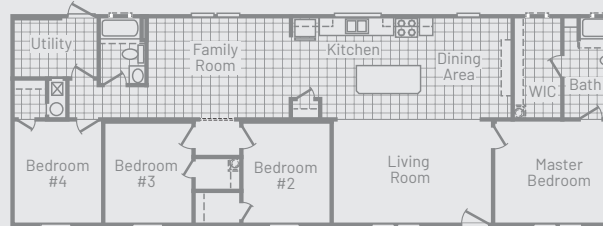
Each unit is created in an environmentally controlled, state-of-the-art facility by skilled artisans, using only the finest materials.



### QUALITY CONTROL

The factory setting allows for a precise assembly system. One that achieves strict efficiency and exacting quality control standards, resulting in remarkably crafted homes.

## POPULAR MODEL



## OUR BRENDELE FLOOR PLAN

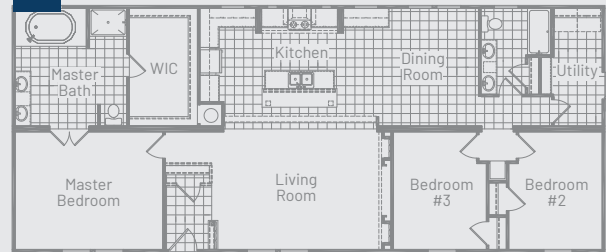
## OUR TEAM OF PROFESSIONALS ARE READY TO ASSIST YOU!

LOW PRESSURE.  
EXPERT ADVICE.

Factory Select Homes in Lugoff, SC is your source for new homes directly from the factory. We deliver homes to **Florida, Georgia, Alabama, Mississippi, Louisiana, South Carolina & North Carolina.**



## BEST SELLER



## OUR AXSON FLOOR PLAN

# FAMILY-OWNED AND OPERATED FOR OVER 20 YEARS

\*Source: Federal Housing Finance Agency Q2 2018 Home Price Index  
Floor plans subject to change

## STYLISH HOME, ATTAINABLE PRICE



### SAME INVESTMENT AS TRADITIONAL HOMES

Manufactured homes appreciate at nearly the same rate as site-built homes.\*



### BUILT TO LAST

Quality construction according to federally mandated building code and inspections.



### SPEEDY CONSTRUCTION

Homes are made efficiently with production lines, robotics, and indoor production, taking weather out of the equation.



### LESS WASTE = BETTER FOR THE ENVIRONMENT

Factory-built houses utilize excess construction materials in other homes.



### ALWAYS AFFORDABLE

Quality materials are purchased in bulk, passing the savings on to you!