



## FREE GUIDED FACTORY AND MODEL VILLAGE TOURS

Head on over for a free, personalized model tour, and one of our knowledgeable housing consultants will answer any questions you may have.



## HOMES ARE GOING FAST!

Come see our newest homes and get Factory Direct Pricing!

**800-591-0603**

115 Titan Roberts Rd  
Lillington, NC 27546

[NorthCarolinaFactoryExpoHomes.com](http://NorthCarolinaFactoryExpoHomes.com)

FACTORY DIRECT PRICING



**800-591-0603**

115 Titan Roberts Rd  
Lillington, NC 27546



SCAN ME

Check out our latest promotions!

[NorthCarolinaFactoryExpoHomes.com](http://NorthCarolinaFactoryExpoHomes.com)



## Your Beautiful New Home IS WAITING

START YOUR HOME JOURNEY



WHY CHAMPION HOMES CENTER

- All homes are sold factory direct, saving our home buyers money
- Wide variety
- Over 18,000 happy homebuyers
- Free factory and model village tours daily
- Specializes in custom orders
- Famous for running HUGE sales & promotions
- Furnished model villages at every sales center
- Convenient, complimentary hotel rooms for customers



THE CHAMPION HOME BUILDERS PROMISE



**PRODUCTION**

The unsurpassed quality of every Champion home is possible thanks to innovative manufacturing processes and a commitment to outstanding design.



**MATERIAL**

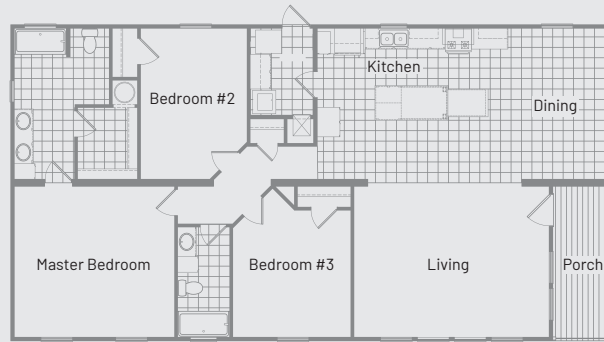
Each unit is created in an environmentally controlled, state-of-the-art facility by skilled artisans, using only the finest materials.



**QUALITY CONTROL**

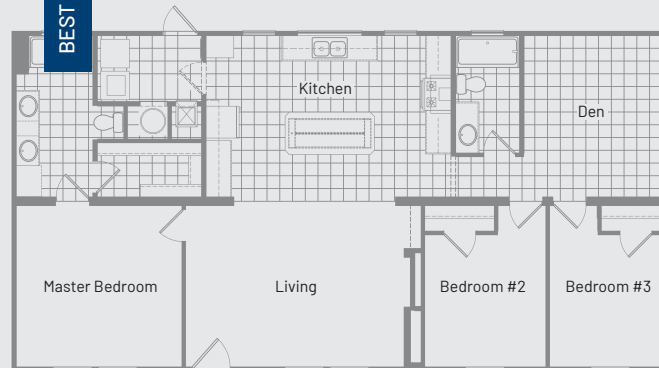
This setting allows for a precise assembly system. One that achieves strict efficiency and exacting quality control standards, resulting in remarkably crafted homes.

POPULAR MODEL



OUR OLIVIA FLOOR PLAN

BEST SELLER



OUR LENOIR FLOOR PLAN

FAMILY-OWNED AND OPERATED FOR OVER **20 YEARS**

\*Source: Federal Housing Finance Agency Q2 2018 Home Price Index  
Floor plans subject to change

OUR TEAM OF PROFESSIONALS ARE READY TO ASSIST YOU!

LOW PRESSURE. EXPERT ADVICE.

Champion Homes Center in Lillington, North Carolina, is your source for new homes directly from the factory. We deliver homes to Virginia, North Carolina, & South Carolina.



STYLISH HOME, ATTAINABLE PRICE



**SAME INVESTMENT AS TRADITIONAL HOMES**

Manufactured homes appreciate at nearly the same rate as site-built homes.\*



**BUILT TO LAST**

Quality construction according to federally mandated building code and inspections.



**SPEEDY CONSTRUCTION**

Homes are made efficiently with production lines, robotics, and indoor production, taking weather out of the equation.



**LESS WASTE = BETTER FOR THE ENVIRONMENT**

Factory-built houses utilize excess construction materials in other homes.



**ALWAYS AFFORDABLE**

Quality materials are purchased in bulk, passing the savings on to you!